



Limited One Year Warranty

T&S warrants to the original purchaser (other than for purposes of resale) that such product is free from defects in material and workmanship for a period of one (1) year from the date of purchase. During this one-year warranty period, if the product is found to be defective, T&S shall, at its options, repair and/or replace it. To obtain warranty service, products must be returned to...

*T&S Brass and Bronze Works, Inc.
Attn: Warranty Repair Department
2 Saddleback Cove
Travelers Rest, SC 29690*

Shipping, freight, insurance, and other transportation charges of the product to T&S and the return of repaired or replaced product to the purchaser are the responsibility of the purchaser. Repair and/or replacement shall be made within a reasonable time after receipt by T&S of the returned product. This warranty does not cover items which have received secondary finishing or have been altered or modified after purchase, or for defects caused by physical abuse to or misuse of the product, or shipment of the products.

Any express warranty not provided herein, and any remedy for Breach of Contract which might arise, is hereby excluded and disclaimed. Any implied warranties of merchantability or fitness for a particular purpose are limited to one year in duration. Under no circumstances shall T&S be liable for loss of use or any special consequential costs, expenses or damages.

Some states do not allow limitations on how long and implied warranty lasts or the exclusion or limitation of incidental or consequential damages, so the above limitations or exclusions may not apply to you. Specific rights under this warranty and other rights vary from state to state.

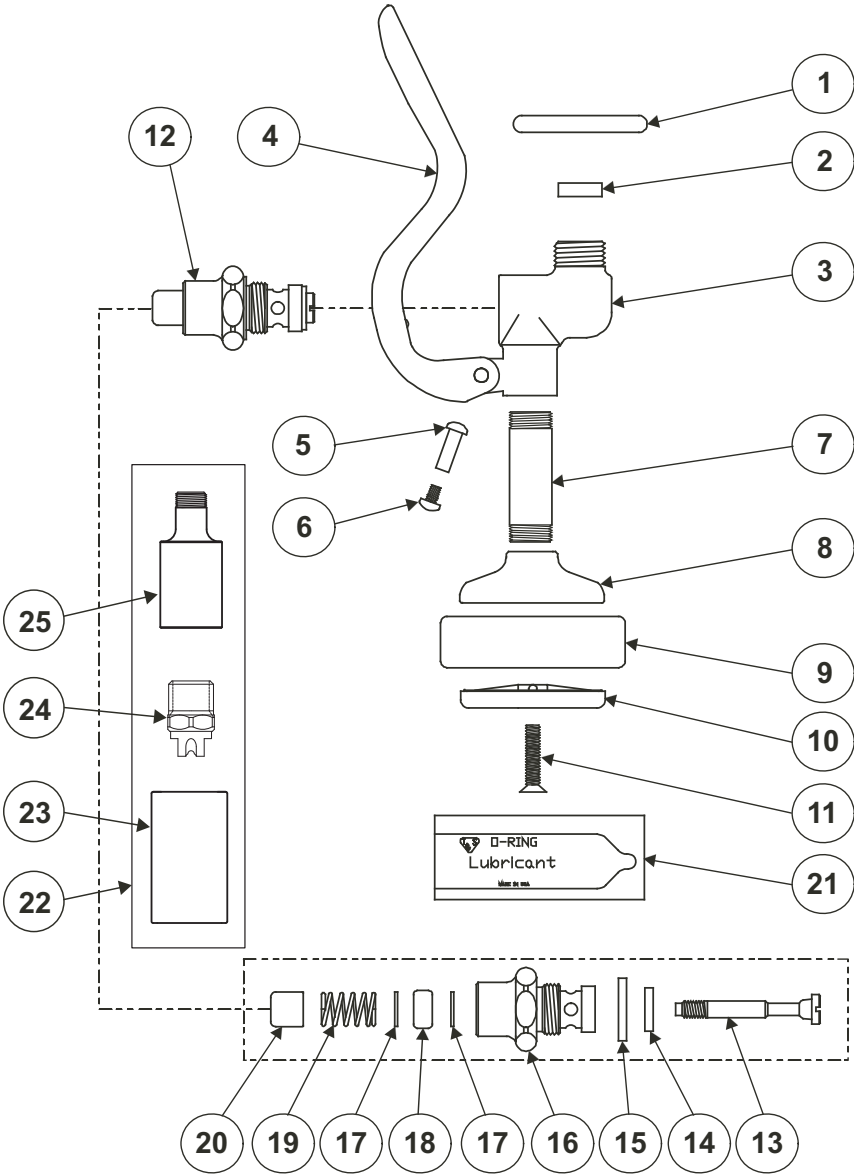
P/N: 098-011027-45 Rev.7
Date: 08-04-09
Drawn: TEH
Checked: JRM 01-04-10
Approved: JHB 01-04-10

Installation and Maintenance Instructions



B-0107 Pre-Rinse Spray Valve B-0107-C Low Flow Spray Valve B-10K Parts Kit

Exploded View



* Some items are listed for instructional purposes and may not be sold as separate parts.

Part Number Guide

Spray Valve Assembly

1	Ring, Hold Down	000907-45
2	* #27 Washer	010476-45
3	Body, Spray Valve	000065-40
4	Handle	001120-45
5	Nut, Handle	000973-45
6	Screw, Handle	003199-45
<i>Parts for B-0107 Only</i>		
7	Nipple	000694-40
8	Cup, Spray	000019-40
9	* Ring, Sprayhead	007861-45
10	* Sprayface	001121-45
11	* Screw, Sprayface	000913-45
<i>Parts for B-0107-C Only</i>		
22	Asm, B-0107-C Spray Nozzle	002662-40
23	Shield	002659-45
24	Spray Nozzle	*
25	Nozzle Holder	*

Bonnet Assembly

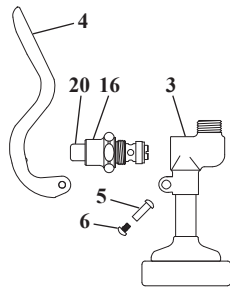
12	Asm, Bonnet	002856-40
13	* Stem	009306-20
14	* Washer, Seat	012915-45
15	* Washer, Bonnet Binding	001040-45
16	Bonnet	000608-25
17	* Washer, Bonnet Brass	000974-45
18	* Stem, Packing	001100-45
19	* Spring, Bonnet	000895-45
20	Pushbutton	000753-25
21	* Grease Pack (O-Ring Lubricant)	012665-45

* Indicates parts Included in the B-10K Parts Kit

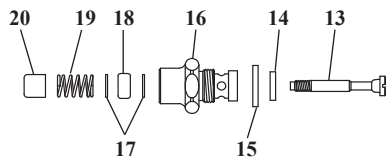
General Instructions

To replace worn parts:

1. Shut off water supply and drain lines. For ease of disassembly and reassembly, the *handle grip* can be removed from no.3.
2. Unscrew no.5 and no.6 to remove no.4. Unscrew and remove no.16 from no.3.
3. Hold no.20 with pliers in one hand, and with screwdriver, carefully unscrew no.13 from no.16.



4. Apply no.21 over full length of no.13 and all over no.18. Replace no.14 (brassy side toward no.16), no.15, no.17, no.18 & no.19 with new parts.



5. Reassemble no.16 by inserting no.13 through all parts. Hold no.20 with pliers, and carefully screw no.13 into no.20 until screw feels tight. Do not use excessive force.

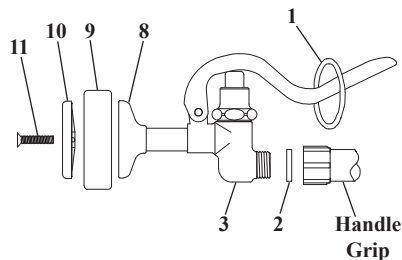
6. Reinsert no.16 in no.3 and tighten securely.

7. **For B-0107 ONLY:** To replace no.9, unscrew no.11 and disassemble. Make sure the groove side of no.9 fits into no.8, and no.10 rest on ridge side. See Figure A.

8. To replace no.2, unscrew handle grip from no.3 and replace with new no.2.

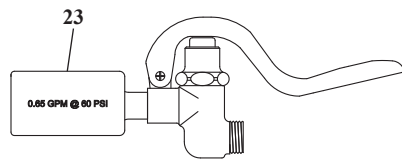
9. Reassemble; turn on water check for leaks.

Figure A



10. **For B-0107-C ONLY:** To replace no.23, slide no.23 off no.25, and slide a new no.23 back onto no.25. See Figure B.

Figure B



Caution: Turn off water supply at base faucet when not in use.

RELATED T&S BRASS PRODUCT LINE



**B-0108
JeTSpray
Spray Valve**



**B-0108-C
JeTSpray
Low Flow
Spray Valve**

T&S BRASS AND BRONZE WORKS, INC.

A firm commitment to application-engineered plumbing products

2 Saddleback Cove, P.O. Box 1088,
Travelers Rest, SC 29690

Phone: (864) 834-4102
Fax: (864) 834-3518

E-mail: tsbrass@tsbrass.com

T & S Brass-Europe
'De Veenhoeve'
Oude Nieuwveenseweg 84
2441 CW Nieuwveen

The Netherlands



RELIABILITY BUILT IN™