

WALL LEDGE

Maximum load claim
SHELF: HOLDS UP TO 11 lbs (4.9 kgs)

TOOLS NEEDED (Not included in product)



HARDWARE (Included in product)

plastic dry wall anchor
Size : 9mm Ø x 32mm L

philip head screws



Anchor screw (6mm Ø x 25mm L)



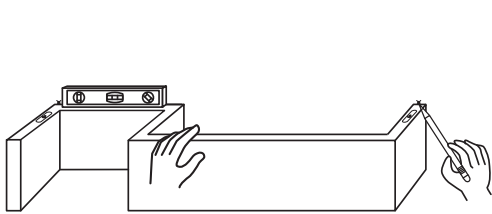
Stud screw (6mm Ø x 30mm L)



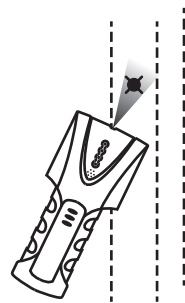
NOTE FOR STUD MOUNTING :

- Anchor is not necessary for stud mounting.
- Additional tool/hardware may be required for stud mounting, or if on wall surfaces other than dry wall. Consult your local hardware store.

STEP 1

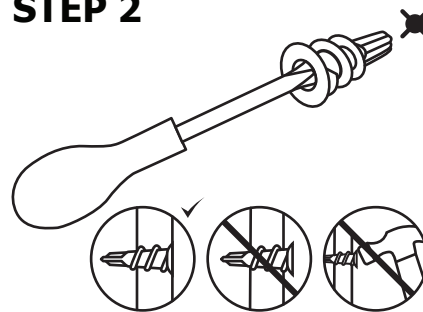


1a
Drywall mounting: Choose a desired location. Mark mounting holes for anchors.

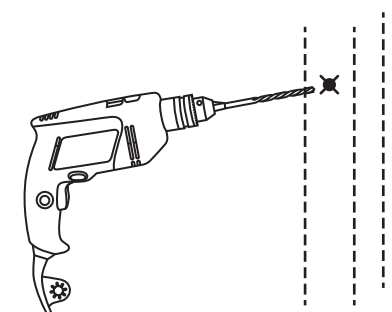


1b
Stud mounting: Choose a desired location. Use a stud finder and mark the location of studs.

STEP 2



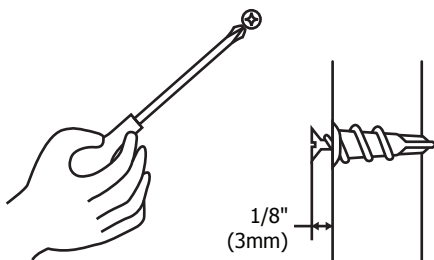
2a
Drywall mounting: Tighten the anchors into dry wall with Philips screw driver until anchors are flush with the wall surface.



2b
Stud mounting: Drill pilot hole and drive the stud screw into the pilot hole.

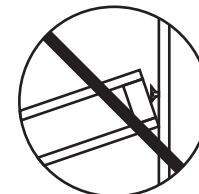
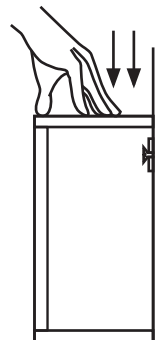
STEP 3

Tighten screws into anchor(s) and the stud(s).



STEP 4

Hang shelf.



If shelf cannot hang on to the screws, untighten the screws slightly and re-hang. Repeat as necessary.