



Undertone®
Under-mount Kitchen Sink
K-3355

Features

- 33-inch minimum base cabinet width.
- 18-gauge stainless steel.
- Under-mount.
- Rounded bowls.
- 9-1/2" (241 mm) deep left bowl and 5-1/2" (140 mm) deep right bowl.
- With SilentShield® sound-absorption technology.
- 30-3/4" (781 mm) x 20-1/8" (511 mm)

Optional Accessories

- K-3191 Sink Rack
- K-3292 Colander/Cutting Board
- K-6139 Sponge Caddy
- K-8801 Sink Strainer

Components

- Product includes:
- 91915 Hardware Kit

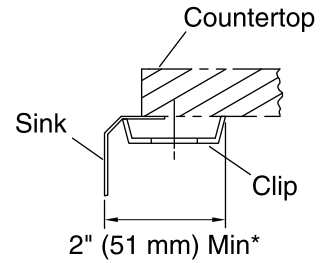
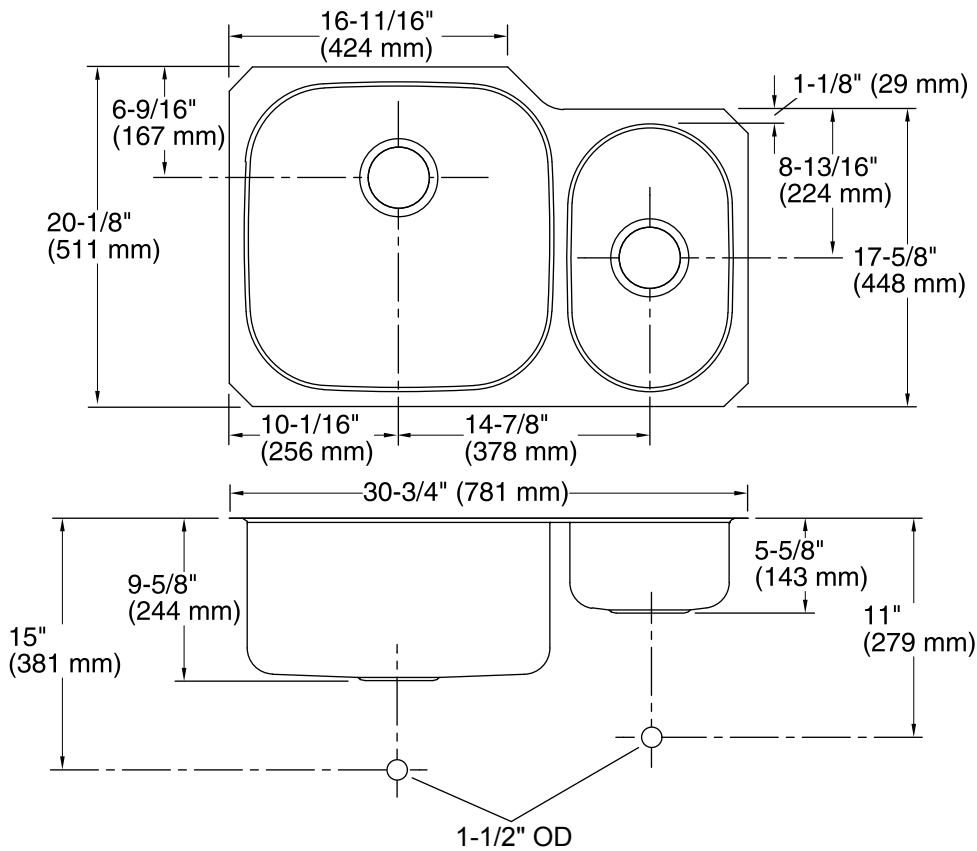


Codes/Standards

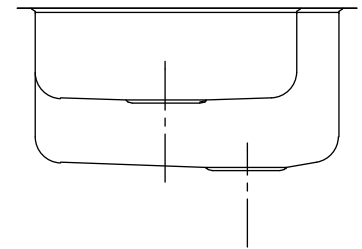
ASME A112.19.3/CSA B45.4

**Lifetime Limited Warranty for
KOHLER® Stainless Steel Sinks**

See website for detailed warranty information.



* Allow clearance around sink rim for clip attachment.



Technical Information

All product dimensions are nominal.

Bowl configuration:	High-low
Installation:	Under-mount
Bowl area (Right)	Length: 9" (229 mm) Width: 15" (381 mm) Bowl depth: 5-1/2" (140 mm)
Bowl area (Left)	Length: 18" (457 mm) Width: 18" (457 mm) Bowl depth: 9-1/2" (241 mm)
Drain hole:	3-5/8" (92 mm)
Template:	Under-mount, 1040559-7, required, included

Notes

Install this product according to the installation guide.

Allow a minimum of 2" (51 mm) clearance around the sink rim for clip attachment.