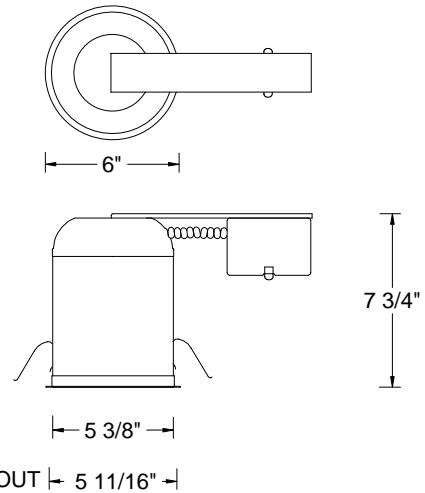


<b>CATALOG NUMBER</b>	<b>TYPE</b>
<b>PROJECT</b>	

**5" LINE VOLTAGE DOWNLIGHTS**

**R-501-R-UA**









<b>Ordering Matrix</b>		
<b>Model</b>	<b>Installation Type</b>	<b>Options</b>
[ ]	[ ]	[ ]
R-501 Recessed 5 inch series	R-Remodel Housing N-New construction	UA: IC/Non-IC rated, Air Tight.

<b>Product Details</b>	
<b>Description:</b>	Line voltage remodel housing.
<b>Materials:</b>	Housing is 20 gauge steel, painted white. Frame, junction box is heavy gauge galvanized steel.
<b>Mounting:</b>	Clips allow easy removal of housing. Accommodates surface thickness of up to 1". 5 11/16" cutout hole.
<b>Ratings:</b>	IC/Non-IC rated. When direct insulation contact, follow lamp type and maximum wattage information listed on the IC label in the housing. When Non-direct insulation contact, follow lamp type and maximum wattage information listed on the NON-IC label, which requires 3" clearance on all sides from any insulation.
<b>J-Box:</b>	Seven knockouts and four Romex® style wiring connectors provided for ease of installation. Rated for branch and chain wiring.
<b>Thermal Protection:</b>	Thermal protector supplied with R-501-R-UA protects against over-lamping.
<b>Listing:</b>	UL & CUL Listed. Suitable for damp locations.

<b>Specification Features</b>
<ul style="list-style-type: none"> <li>● Certified Air Tight per ASTM E283.</li> <li>● 5 year W.A.C. Lighting product warranty.</li> </ul>

**Compatible Trims (max wattage for R-50X series is 75W):**

<p><b>R-520 Step baffle</b></p> <table border="1"> <thead> <tr> <th>Finish</th> <th>Baffle</th> <th>Trim</th> </tr> </thead> <tbody> <tr> <td>BK/WT</td> <td>Black</td> <td>White</td> </tr> <tr> <td>BN</td> <td>Brushed Nickel</td> <td>Brushed Nickel</td> </tr> <tr> <td>BZ</td> <td>Bronze</td> <td>Bronze</td> </tr> <tr> <td>WT/WT</td> <td>White</td> <td>White</td> </tr> </tbody> </table> <p>Lamp:</p> <ul style="list-style-type: none"> <li>IC rated: 50W PAR30, 50W R30 , 40W A19</li> <li>NON-IC rated: 75W PAR30, 75W R30 , 60W A19</li> </ul>	Finish	Baffle	Trim	BK/WT	Black	White	BN	Brushed Nickel	Brushed Nickel	BZ	Bronze	Bronze	WT/WT	White	White		<p><b>R-521 Open reflector</b></p> <table border="1"> <thead> <tr> <th>Finish</th> <th>Reflector</th> <th>Trim</th> </tr> </thead> <tbody> <tr> <td>CL/WT</td> <td>Specular Clear</td> <td>White</td> </tr> <tr> <td>BN</td> <td>Specular Clear</td> <td>Brushed Nickel</td> </tr> <tr> <td>BZ</td> <td>Specular Clear</td> <td>Bronze</td> </tr> </tbody> </table> <p>Lamp:</p> <ul style="list-style-type: none"> <li>IC rated: 50W PAR30, 50W R30 , 40W A19</li> <li>NON-IC rated: 75W PAR30, 75W R30 , 60W A19</li> </ul>	Finish	Reflector	Trim	CL/WT	Specular Clear	White	BN	Specular Clear	Brushed Nickel	BZ	Specular Clear	Bronze	
Finish	Baffle	Trim																												
BK/WT	Black	White																												
BN	Brushed Nickel	Brushed Nickel																												
BZ	Bronze	Bronze																												
WT/WT	White	White																												
Finish	Reflector	Trim																												
CL/WT	Specular Clear	White																												
BN	Specular Clear	Brushed Nickel																												
BZ	Specular Clear	Bronze																												
<p><b>R-532 Gimbal ring</b></p> <table border="1"> <thead> <tr> <th>Finish</th> <th>Trim</th> </tr> </thead> <tbody> <tr> <td>BN</td> <td>Brushed Nickel</td> </tr> <tr> <td>BZ</td> <td>Bronze</td> </tr> <tr> <td>WT</td> <td>White</td> </tr> </tbody> </table> <p>Lamp:</p> <ul style="list-style-type: none"> <li>NON-IC rated: 75W PAR30</li> </ul>	Finish	Trim	BN	Brushed Nickel	BZ	Bronze	WT	White		<p><b>R-535 Eyeball</b></p> <table border="1"> <thead> <tr> <th>Finish</th> <th>Trim</th> </tr> </thead> <tbody> <tr> <td>BN</td> <td>Brushed Nickel</td> </tr> <tr> <td>BZ</td> <td>Bronze</td> </tr> <tr> <td>WT</td> <td>White</td> </tr> </tbody> </table> <p>Lamp:</p> <ul style="list-style-type: none"> <li>IC rated: 75W PAR30</li> <li>NON-IC rated: 75W PAR30</li> </ul>	Finish	Trim	BN	Brushed Nickel	BZ	Bronze	WT	White												
Finish	Trim																													
BN	Brushed Nickel																													
BZ	Bronze																													
WT	White																													
Finish	Trim																													
BN	Brushed Nickel																													
BZ	Bronze																													
WT	White																													
<p><b>R-540 Scoop wall wash with step baffle</b></p> <table border="1"> <thead> <tr> <th>Finish</th> <th>Baffle</th> <th>Trim</th> </tr> </thead> <tbody> <tr> <td>WT/WT</td> <td>White</td> <td>White</td> </tr> </tbody> </table> <p>Lamp:</p> <ul style="list-style-type: none"> <li>NON-IC rated: 75W PAR30, 75W R30 , 40W A19</li> </ul>	Finish	Baffle	Trim	WT/WT	White	White		<p><b>R-522 Shower Light</b></p> <table border="1"> <thead> <tr> <th>Finish</th> <th>Trim</th> </tr> </thead> <tbody> <tr> <td>WT</td> <td>White</td> </tr> </tbody> </table> <p>Lamp:</p> <ul style="list-style-type: none"> <li>NON-IC rated: 40W A19</li> </ul>	Finish	Trim	WT	White																		
Finish	Baffle	Trim																												
WT/WT	White	White																												
Finish	Trim																													
WT	White																													

**Finish Key:**

BK-Black, BN-Brushed Nickel, CL-Specular Clear, WT-White, BZ- Bronze

**Notes:**

The full catalog number for a complete downlight includes the model numbers for both the trim and the housing. More information regarding each individual trim can be viewed on the individual trim spec sheets.