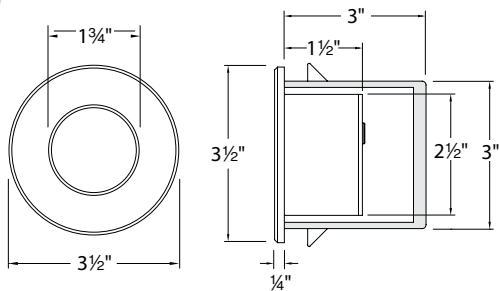


Model: WL-LED310-C

LEDme® Step Light

WAC LIGHTING

Responsible Lighting®



Fixture Type:

Catalog Number:

Project: _____

Location: _____

PRODUCT DESCRIPTION

Circular window LEDme® Step Light. Designed for safety and style on stairways, patios, decks, balcony areas, walkways and building perimeters. Features an architectural design. Energy efficient for long-lasting indoor and outdoor lighting solutions. Creates an attractive, romantic impression at night.

FEATURES

- Direct wiring, no driver needed
- Low profile, flush to wall aesthetics with no visible hardware
- 40,000 hour rated life
- Balanced lighting, free of shadows with minimum glare
- Up to 200 fixtures can be connected in parallel
- Replaceable LED module
- High Color Rendering Index (CRI) for true color
- 5 year WAC Lighting product warranty

SPECIFICATIONS

Construction: Die-cast aluminum.

Power: Direct wiring, no remote driver needed.
Input voltage: 120VAC 50/60Hz.

Light Source: 3000K Samsung HV-AC High Power LED, CRI: 83.
Total power consumption of 3.9W.

Mounting: Supplied with junction box for recessed installation. Suitable for new construction or retrofit installations. See next page for spacing recommendations.

Dimming: Dim to 10% with electronic low voltage (ELV) dimmer. Approved dimmers: Lutron Skylark SELV-300P-WH and Leviton Vizia VPE04.

Finish: Brushed Nickel (BN), Bronze (BZ) and White (WT) powder coat paint.

Standards: UL Listed, meets IP66 standards for wet locations.

FIXTURE PERFORMANCE

Model #	Lumens	Efficacy
WL-LED310-C-BZ	138	35.4 Lm/W
WL-LED310-C-BN	121	31.0 Lm/W
WL-LED310-C-WT	116	30.0 Lm/W

ORDER NUMBER

Model #	Finish
WL-LED310-C	BN <i>Brushed Nickel</i>
	BZ <i>Bronze</i>
	WT <i>White</i>

FINISHES



WL-LED310-C -

Example: **WL-LED310-C-WT**

WAC Lighting
www.waclighting.com
Phone (800) 526.2588 • Fax (800) 526.2585

Headquarters/Eastern Distribution Center
44 Harbor Park Drive • Port Washington, NY 11050
Phone (516) 515.5000 • Fax (516) 515.5050

Western Distribution Center
1750 Archibald Avenue • Ontario, CA 91760
Phone (800) 526.2588 • Fax (800) 526.2585

Model: WL-LED310-C

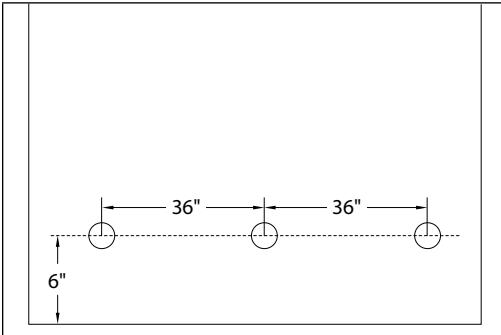
LEDme® Step Light

WAC LIGHTING

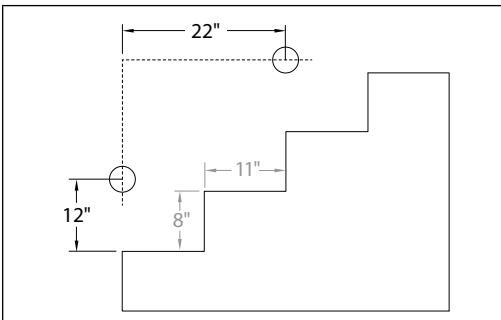
Responsible Lighting®

SPACING RECOMMENDATIONS FOR OPTIMAL LIGHT DISTRIBUTION

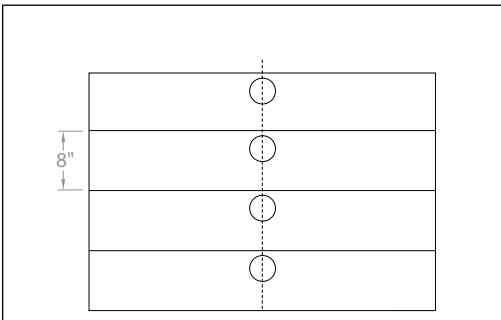
Corridors/Hallways etc.



Stairs – Wall Mount (side view)



Stairs – Step Mount (front view)



Mount in center of stair as close to the next tread as possible.
For best results use one light for every step.

WAC Lighting
www.waclighting.com
Phone (800) 526.2588 • Fax (800) 526.2585

Headquarters/Eastern Distribution Center
44 Harbor Park Drive • Port Washington, NY 11050
Phone (516) 515.5000 • Fax (516) 515.5050

Western Distribution Center
1750 Archibald Avenue • Ontario, CA 91760
Phone (800) 526.2588 • Fax (800) 526.2585