

# INSTALLATION INSTRUCTION

## Line Voltage - 6" IC Remodel

R-603D-R-ICA

# WAC LIGHTING

Responsible Lighting®

### SAFETY INSTRUCTION

IMPORTANT: NEVER attempt any work without shutting off the electricity.

- Read all instructions before installing.
- For installation by a qualified electrician.
- System is intended for installation in accordance with National Electric Code, and local regulations. Consult with local inspector to assure compliance.
- To reduce the risk of fire, electrical shock and injuries to persons, turn off power at main switch before installing or modifying the system.
- Retain instructions for future maintenance reference.
- UL listed.

### OVERVIEW

Remodeling housing suitable for direct insulation contact, Airtight rated. Trims ordered separately.

### CUTOUT:

1. Cut a 6 1/2" hole in the existing ceiling.
2. Pull ceiling wire through the hole.

### WIRING:

1. Junction box is rated for "chain wiring" (one fixture to the next) and is supplied with two trade size knockouts.
2. Open a knock out hole.
3. Wire connections must be installed in a manner that does not interfere with the strain relief action of the clamp.
4. Remove spring latched junction box door and connect wires: White fixture wire to white building wire, black fixture wire to black (hot) building wire, and green ground wire to bare ground wire, with wire nuts supplied.
5. Replace junction box door.

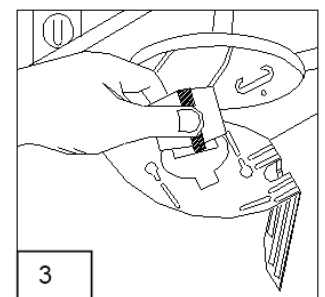
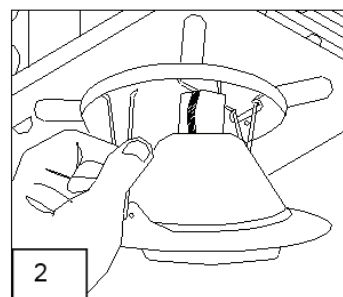
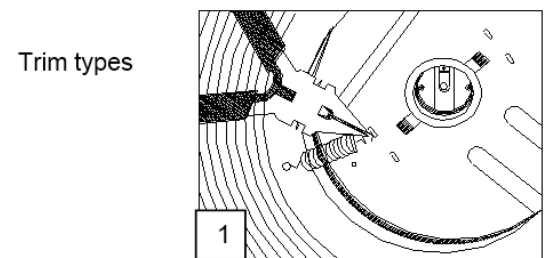
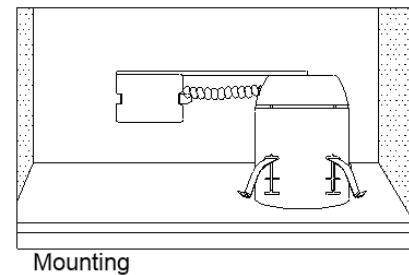
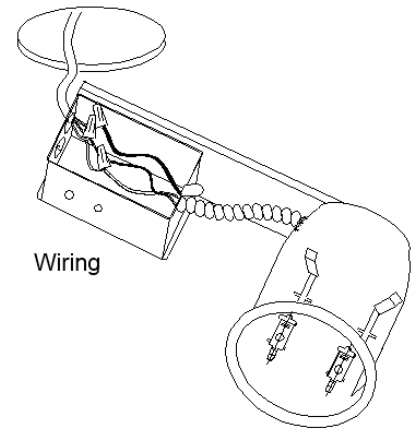
### MOUNTING:

1. Pivot the J box end up through the hole, followed by the can.
2. Hold the rim snug to the ceiling surface.
3. From inside the housing push and pivot the housing clips so they make contact with the top of the ceiling Note: 3/4" maximum ceiling thickness.

### MOUNTING:

1. Attach trims to the housing by reaching through the center of the trim to hook the coils spring to a mounting hole on the side the socket.
2. Closed aperture trims use scissor springs; Compress spring ends and feed into the spring cleats on the side of the housing.
3. For adjustable trims, the socket snaps out and is attached to the top of the trim.

Follow lamp type and maximum wattage information listed on the label in the housing.



WAC Lighting  
www.waclighting.com  
Phone (800) 526.2588 • Fax (800) 526.2585

Headquarters/Eastern Distribution Center  
44 Harbor Park Drive • Port Washington, NY 11050  
Phone (516) 515.5000 • Fax (516) 515.5050

Western Distribution Center  
1750 Archibald Ave • Ontario, CA 91761  
Phone (800) 526.2588 • Fax (800) 526.2585