



Turn off and disconnect the supply line. Drain the tank by lifting tower.



Sponge out any remaining water. Detach the hook from lift arm.



Disconnect the refill tube from the tower. Detach the tank from bowl by removing tank fasteners. (not shown)



Place the tank on it's side, remove the coupling gasket (not shown) and lock nut.



Remove the old flush tower and discard.



Install a New Champion4 Flush valve with the vent tube positioned as shown.



Tighten the lock nut hand tight plus an additional 3/4 turn.



Align the lock nut "flat" parallel to back edge of tank.



Remove 2 inches (50mm) from the end of the refill tube; save the "S" clip for the next step.



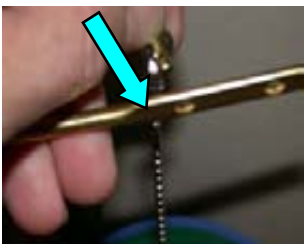
Re-insert the "S" clip into the end of the refill tube.



Affix the end of the refill tube to the valve overflow at the location shown.



Alternate view of the refill tube attachment.



Remove the Hair Pin Cotter from the new Clevis Pin assembly. Insert the clevis pin through the inbound hole location.



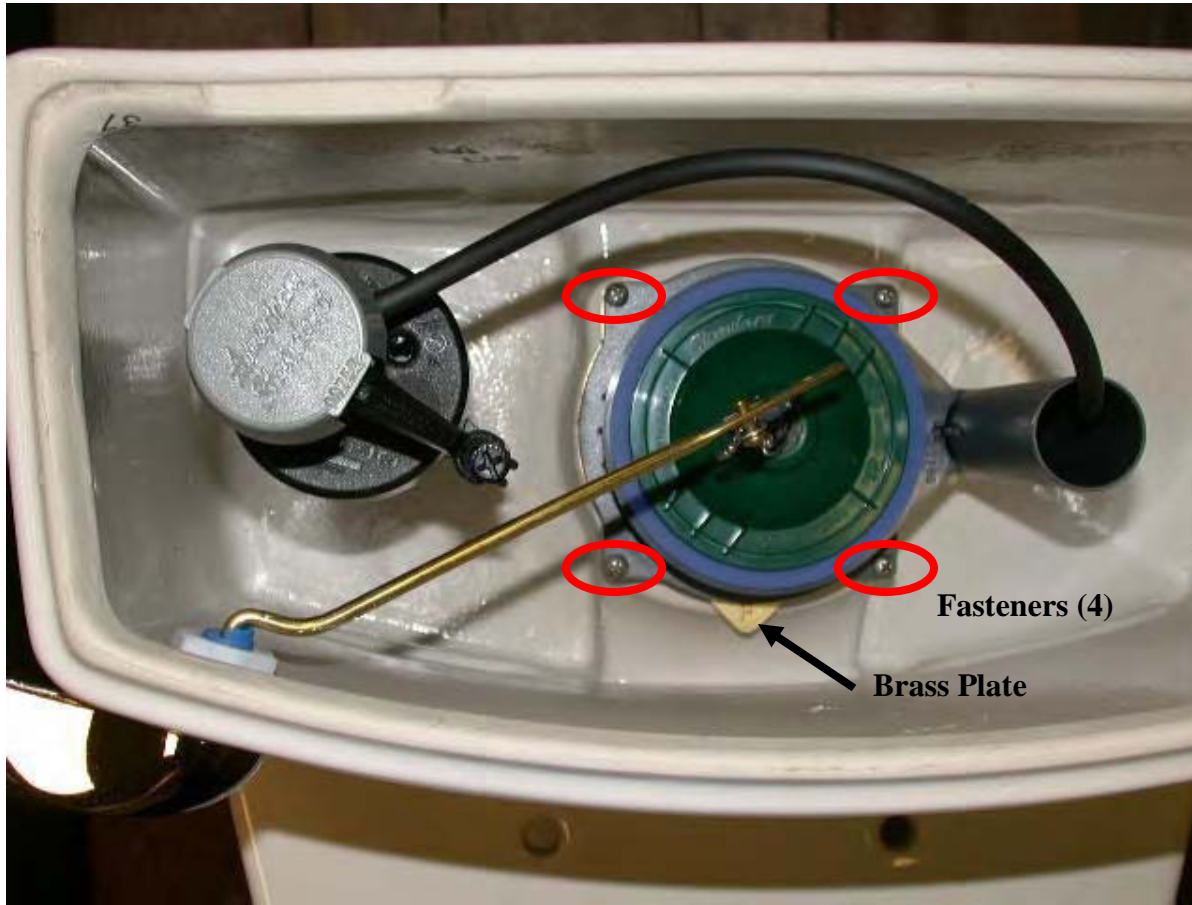
Re-insert the hair pin cotter through the clevis pin hole.



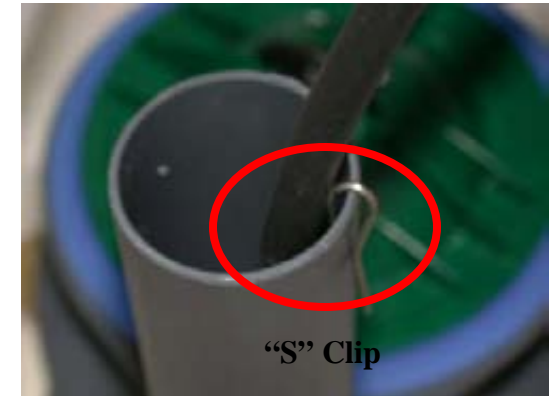
Properly configured Champion4 Flushing System.

Replace the coupling gasket over the lock nut, re-fit the tank assembly to the bowl and tighten the tank mounting fasteners in a alternating manner. Re-connect the water supply. Adjust the water level to 1 inch below the overflow tube. Replace the tank lid.

## Champion4 - 1pc Valve Installation



Turn off the water supply and drain the tank by lifting the old valve top. (not shown) Disconnect the old refill tube and chain attachment. Remove the 4 fasteners by turning counter-clockwise. Discard the old valve. Install 4 new fasteners into the new Champion4 valve flange. Position the new valve as shown aligning the fasteners with mounting holes in Brass Plate. Tighten until snug in an alternating pattern. Attach lift chain and refill tube as shown at right. Turn on the water supply. If necessary, adjust the water level to 1" from top of overflow tube.



Attach the "S" clip to end of the refill hose & affix to overflow tube as shown.



Remove the hair pin cotter from the clevis pin. Insert the clevis pin through the inbound hole in the lever arm, retain with the hair pin cotter.