

SM07486

Bike Rack

Assembly Instructions



READ ALL INSTRUCTIONS AND WARNINGS BEFORE USING THIS PRODUCT.

This manual provides important information on proper operation & maintenance. Every effort has been made to ensure the accuracy of this manual. These instructions are not meant to cover every possible condition and situation that may occur. We reserve the right to change this product at any time without prior notice.

IF THERE IS ANY QUESTION ABOUT A CONDITION BEING SAFE OR UNSAFE, DO NOT OPERATE THIS PRODUCT!

HAVE QUESTIONS OR PROBLEMS? DO NOT RETURN THIS PRODUCT TO THE RETAILER - CONTACT CUSTOMER SERVICE.

If you experience a problem or need parts for this product, visit our website <http://www.buffalotools.com> or call our customer help line at **1-888-287-6981, Monday-Friday, 8 AM - 4 PM Central Time**. A copy of the sales receipt is required.

FOR CONSUMER USE ONLY – NOT FOR PROFESSIONAL USE.

KEEP THIS MANUAL, SALES RECEIPT & APPLICABLE WARRANTY FOR FUTURE REFERENCE.

SM07486 Bike Rack Assembly Instructions



FEATURES:

- Holds Up To 4 Bikes
- 120 Lb Load Capacity
- Minor assembly required
- Black powder-coated finish
- Hitch Pin not included

This 4-bike hitch rack mounts to any 2 inch receiver hitch for hauling up to 4 bicycles. It is not recommended for use with trailers or 5th wheel.

FOR CONSUMER USE ONLY – NOT FOR PROFESSIONAL USE

⚠ WARNING

READ AND UNDERSTAND ALL INSTRUCTIONS. Failure to follow all instructions listed below may result in electric shock, fire and/or serious personal injury.

RECOGNIZE SAFETY SYMBOLS, WORDS AND LABELS

What You Need to Know About Safety Instructions

Warning and Important Safety Instructions appearing in this manual are not meant to cover all possible conditions and situations that may occur. Common sense, caution and care must be exercised when operating or cleaning tools and equipment.

Always contact your dealer, distributor, service agent or manufacturer about problems or conditions you do not understand.

IMPORTANT SAFETY INSTRUCTIONS

WORK AREA

⚠ WARNING

Keep your work area clean and well lit. Cluttered work benches and dark work areas may cause accidents or injury.

- Be aware of all power lines, electrical circuits, water pipes near your work area, particularly those hazards below the work operator's view that may be unintentionally contacted and may damage.
- Stay alert, watch what you are doing and use common sense
- Secure all bicycles loaded on the bike hitch rack.
- Never use with a trailer jack or 5th wheel.

Keep bystanders, children and visitors away while operating a power tool. Distractions can cause you to lose control.

BIKE HITCH RACK USE AND CARE

⚠ WARNING

- Do not modify the bike hitch rack in any way. Unauthorized changes could affect the function and/or safety of the equipment for which the bike hitch rack was designed.
- Always check for damaged or worn parts before using. Do not use if bike hitch rack is damaged, it may cause damage or injury..
- Do not exceed the bike hitch rack 120-lb. load capacity.
- Maintain your bike hitch rack. It is recommended that the general condition of the rack be examined before it is used. Keep the rack in good repair by adopting a program of conscientious repair and maintenance in accordance with the recommended procedures found in this manual.
- Keep the rack clean. A properly maintained bike hitch rack will work more effectively. Keep all of the parts dry, clean, and free from oil and grease.
- Cleaning. Use only soap and a damp cloth to clean your bike hitch rack.

⚠ WARNING

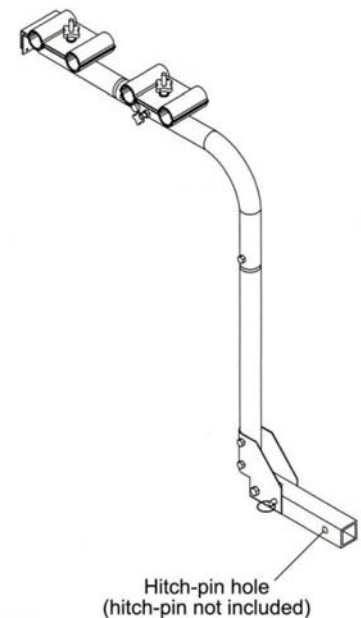
- **RISK OF FIRE/FIRE HAZARD** Never allow loads or items on the bike hitch rack to block or impede exhaust from vehicle.
- This can cause a fire or damage to personal property or vehicle.

Step 1: Two person installation is recommended to lift the bike hitch rack into place.

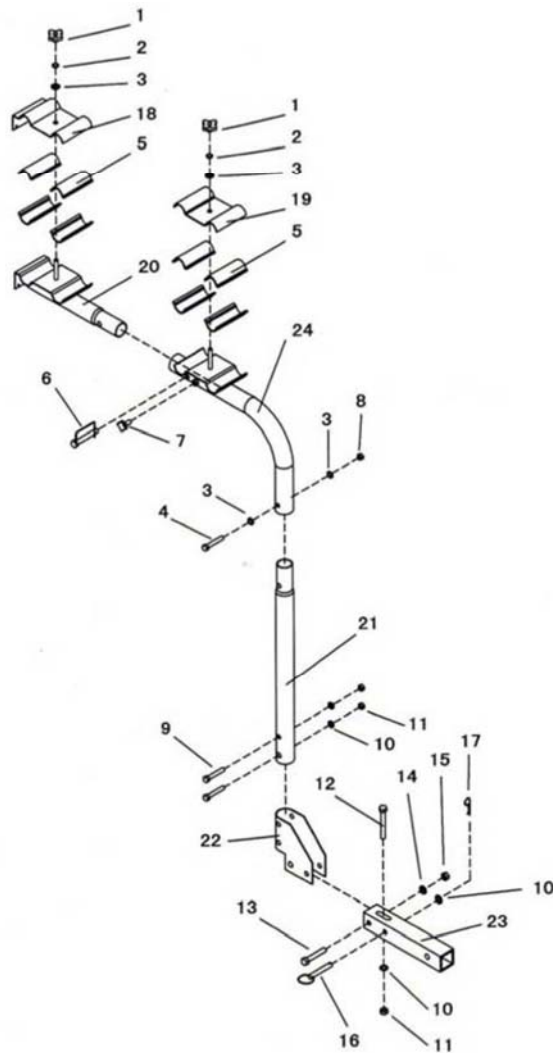
Step 2: Lift the bike hitch rack and insert receiver mounting bar into the hitch receiver on the vehicle.

Step 3: Line up the horizontal hole in the receiver mounting bar with the hole in your hitch.

When the holes line up, place your hitch pin (or locking mechanism) through the holes to secure the bike hitch rack.



PARTS LIST AND DIAGRAM



Part#	Description	Qty.	Part#	Description	Qty.
1	Bolt M10	2	13	Bolt M16X 90	1
2	Φ 10 Spring Washer	2	14	Φ 16 Washer	1
3	Φ 10 Washer	4	15	Nut M16	1
4	Bolt M10X60	1	16	Pin	1
5	Plastic	8	17	"R" Pin	1
6	Φ 12 Pin	1	18	Bike Holder Plate	1
7	Bolt M10	1	19	"W" Plate	1
8	Nut M10	1	20	Bike Holder Tube	1
9	Bolt M12X75	2	21	Center Support	1
10	Φ 12 Washer	4	22	Elbow Plate	1
11	Nut M12	3	23	Hitch Base	1
12	Bolt M12X100	1	24	Elbow Support	1