

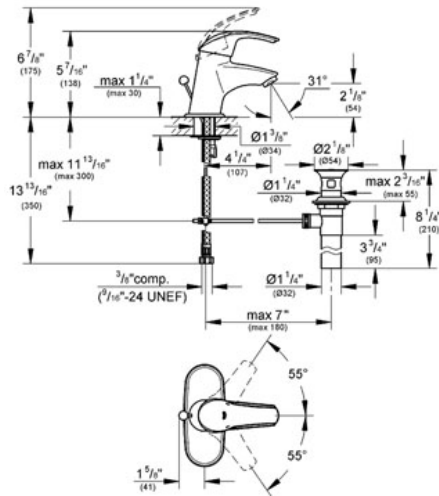
EUROSMART  
Lavatory centerset  
S-Size

MODEL # 32709

Pure Freude an Wasser

GROHE

GROHE America, Inc | 200 North Gary Avenue, Suite G, Roselle, IL 60172  
Phone: +1 (800) 444-7643 | Fax: +1 (800) 225-2778 | us-customerservice@grohe.com



**Product Description:**  
Lavatory centerset  
S-Size

**Standard Specification:**

- GROHE Starlight® finish
- Max Flow Rate 1.5 gpm (5.7 L/min)

**Applicable Codes & Standards:**

- Energy Policy Act of 1992
- NSF 61
- ASME A112.18.1/CSA B125.1
- US Federal and State material regulations
- EPA WaterSense®
- ICC/ANSI A117.1

**Color:**  
 32709 001 chrome