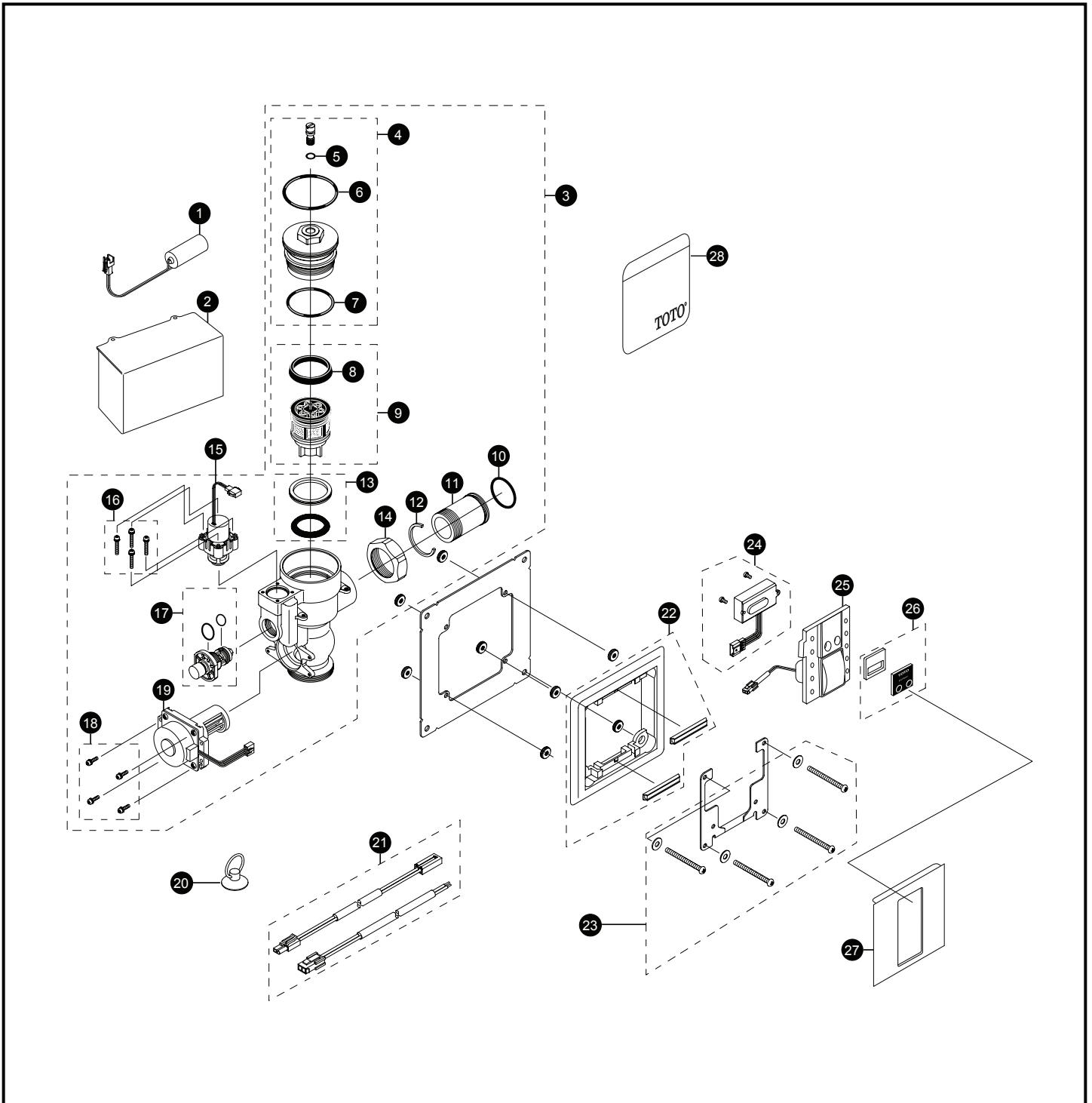


# TET3LN#SS Series

TET3LN31#SS  
TET3LN32#SS  
TET3LN33#SS  
TET3LN#SS

## EcoPower® Sensor High Efficiency Toilet Flush Valve Concealed (4" x 4") - 1.28 Gpf Hydro-Power Charge



# TET3LN#SS Series

TET3LN31#SS  
 TET3LN32#SS  
 TET3LN33#SS  
 TET3LN#SS

## EcoPower® Sensor High Efficiency Toilet Flush Valve Concealed (4" x 4") - 1.28 Gpf Hydro-Power Charge

| Item | Part        | Description                              | Item  | Part | Description                                       |
|------|-------------|--|---|------|---|
| 1    | THP3053     | Back-Up Battery                          | <b>Vacuum Breaker Sets</b>  |      |   |
| 2    | TH559EDV548 | Toilet Valve Controller                  | VB13RB-31   |      | Concealed - Back Spud (1-1/2" Outlet)             |
| 3    | TH559EDV557 | HET Valve Body Assembly                  | VB9RB-32  |      | Concealed - Top Spud (1-1/2" Outlet)              |
| 4    | TH559EDV507 | Valve Cap Assembly (Toilet 1.6/1.28 GPF) | VB13RB-33   |      | Concealed - Back Spud Floor Mount (1-1/2" Outlet) |
| 5    | TH305SV111  | O-Rings (Cap Screw) (10 Pieces)          | <b>Note:</b> For additional information, refer to the individual vacuum breaker parts sheets. |      |   |
| 6    | TH305SV120  | O-Rings (Valve Cap) (10 Pieces)          |   |      |   |
| 7    | TH305SV112  | O-Rings (Valve Guide) (10 Pieces)        |   |      |   |
| 8    | TH305SV103  | U-Packing (For Piston) (10 Pieces)       |   |      |   |
| 9    | TH323V103R  | Piston Assembly (1.6/1.28 GPF)           |   |      |   |
| 10   | TH305SV106  | O-Rings (Tail Piece) (10 Pieces)         |   |      |   |
| 11   | TH305SV114  | Tail Piece                               |   |      |   |
| 12   | TH305SV105  | Locking Rings (10 Pieces)                |   |      |   |
| 13   | TH321       | Seal Washer Kit                          |   |      |   |
| 14   | TH305SV113  | Nut                                      |   |      |   |
| 15   | TH559EDV510 | Solenoid Unit & Diaphragm Assy           |   |      |   |
| 16   | TH559EDV301 | Double Sems Screws M3 (4 Pieces)         |   |      |   |
| 17   | TH559EDV558 | Manual Flushing Button                   |   |      |   |
| 18   | TH559EDV505 | Double Sems Screws M3 (4 Pieces)         |   |      |   |
| 19   | TH559EDV503 | Hydro-Power Generator (Toilet)           |   |      |   |
| 20   | TH559EDV346 | Suction Tool Set                         |   |      |   |
| 21   | TH559EDV556 | Extension Wire Set                       |   |      |   |
| 22   | TH559EDV347 | Surface Mounting Frame                   |   |      |   |
| 23   | TH559EDV350 | Adjusting Screw Set                      |   |      |   |
| 24   | TH559EDV550 | Sensor Controller & Screws Set           |   |      |   |
| 25   | TH559EDV552 | Touch Button Assembly Unit               |   |      |   |
| 26   | TH559EDV553 | Cover Glass                              |   |      |   |
| 27   | TH559EDV555 | 4" x 4" Front Panel                      |   |      |   |
| 28   | 0EU3020     | 1.28 Water Saving Sticker                |   |      |   |

### Product Number Explanations

#### Flush Valve

(T) Fitting  
 (E) Electronic  
 (T) Toilet 1.28  
 (3) Concealed 4"x4" Plate  
 (G) Dynamo (Hydro Generator)  
 (N) Neutral Rough-In  
 (31) 1-1/2" Outlet\_Back Spud  
 (32) 1-1/2" Outlet\_Top Spud  
 (33) 1-1/2" Outlet\_Back Spud Floor Mount  
 (#SS) Stainless Finish